



Performance & Burn In Test Rev. 1.0

Table of Contents

1. Overview
2. Performance Measurement Tools and Results
 - 2.1 Test Platform
 - 2.2 Test target and Using SATA CD, DVD R/W Drive
 - 2.3 Install Hardware
 - 2.4 Nero CD-DVD Speed 4.7.7.16 performance test
3. Burn In Tests and Results
 - 3.1 BurnInTestv7.0 Pro burn in test
4. Summary

U216A / Slimline SATA CD, DVD R/W to USB 3.0 Module

1. Overview

U216A adapter card, which provides a Slimline SATA 7+6pin connector, can be converted into a USB 3.0 standard interface. Built-in ASMedia ASM1053 controller IC to achieve the conversion of the SATA signals to USB signals.

2. Tools and Results of Performance Measurement

2.1 Test Platform:

M/B : GIGABYTE [GA-X58A-UD3R](#)
CPU : Intel [i7-930](#), 2.8MHz/ 8G Cache/ 4.8GT
Memory : Kingston [KVR1333D3N9/2G](#), 1333MHz,2G Byte DIMM*2
ATX Power : TC START W500, [500W ATX](#),12V V2.2 Power Supplier
Graphic : Asus NVIDIA, [Geforce 210](#)
USB port : [USB 3.0 portx2](#)
OS : Microsoft [Windows 7 64bit OS](#)

2.2 Test target: 216A adapter and Panasonic [UJ8D1](#) Disc Drive



U216A Adapter

U216A + Panasonic UJ8D1

2.3 Install Hardware:

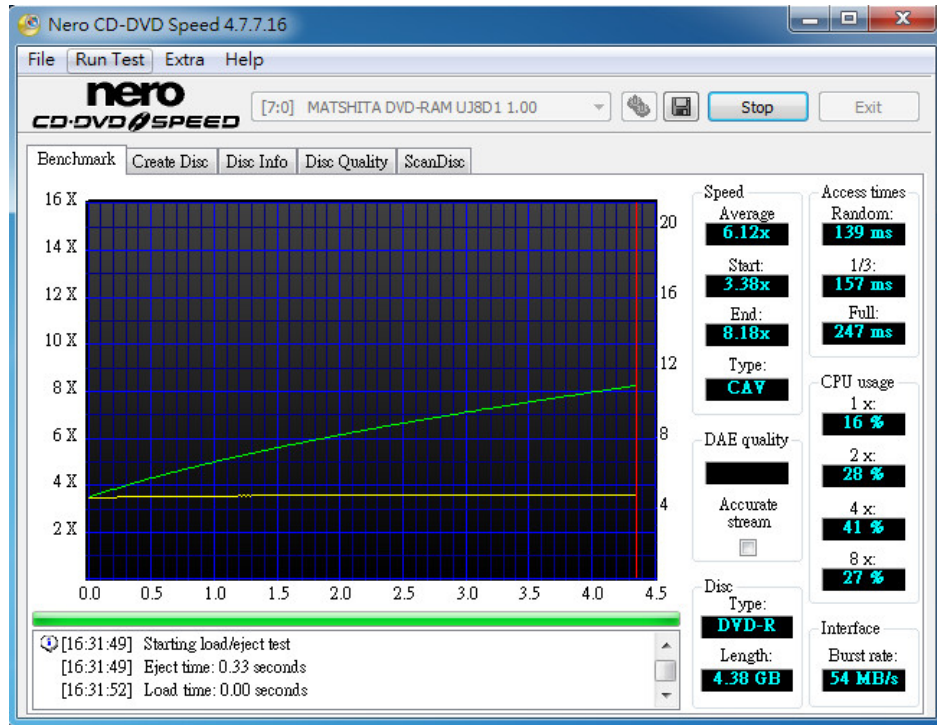
Insert U416A converter's Slimline SATA receptacle connector into Panasonic [UJ8D1](#) plug, connect U416A converter to USB 3.0 Port x2 of [GA-X58A-UD3R](#). and then input blank discs to UJ8D1 Drive. (Please refer to the Installation Notes).

U216A / Slimline SATA CD, DVD R/W to USB 3.0 Module

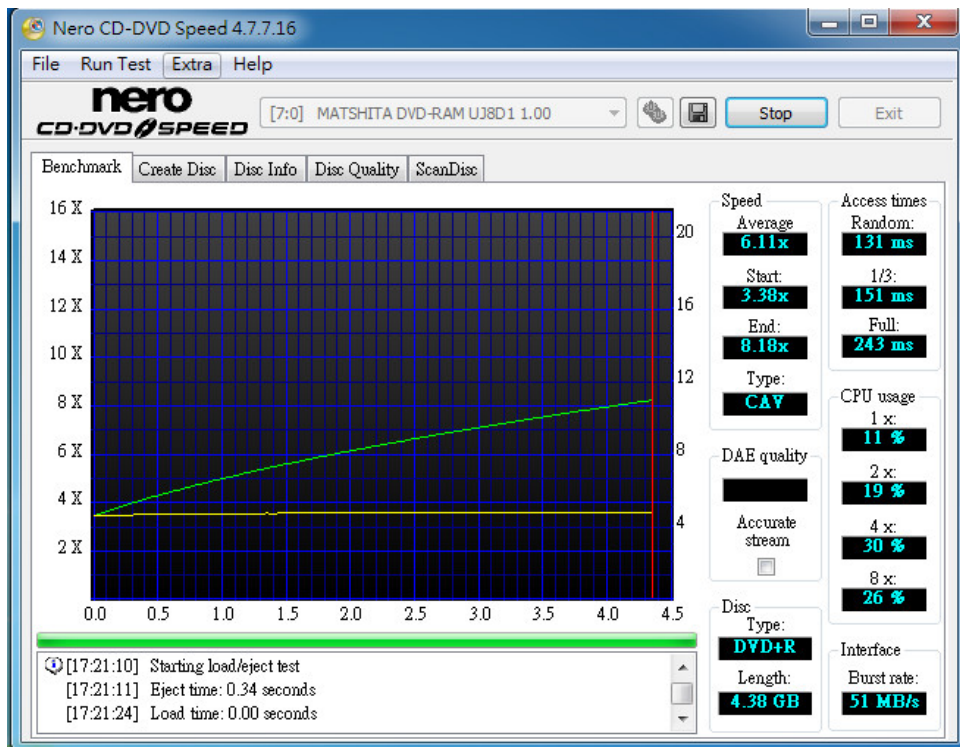
2.4 Nero CD-DVD Speed 4.7.7.16 performance test

2.4.1 Benchmark:

2.4.1.1 Used RITEK / DVD-R 8x blank Discs



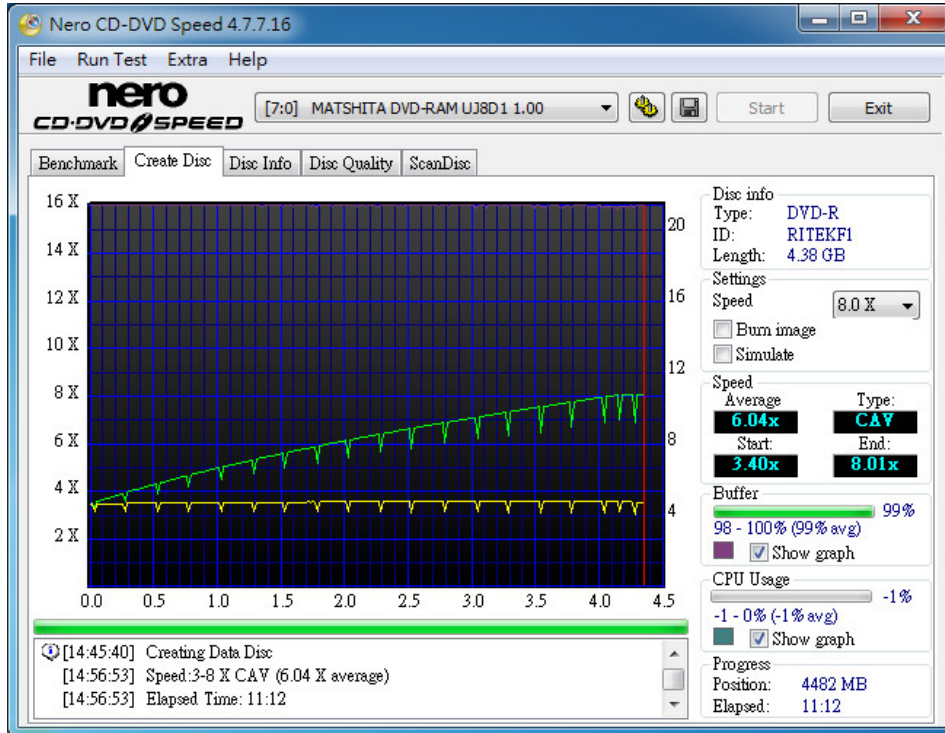
2.4.1.2 2.4.1.1 Used RITEK / DVD+R 8x blank Discs



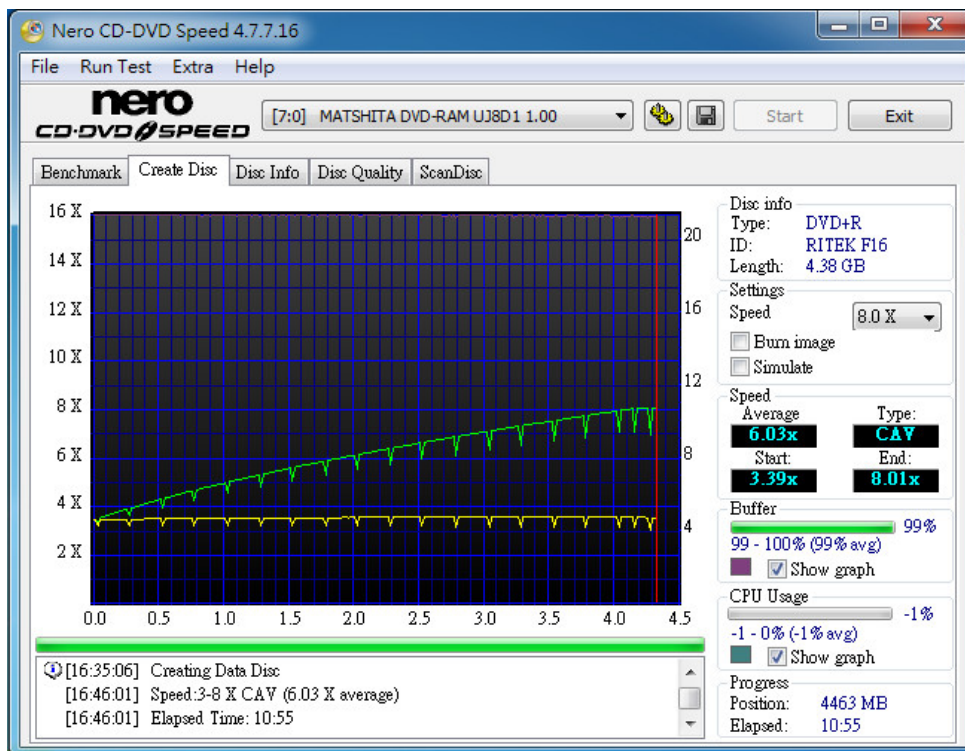
U216A / Slimline SATA CD, DVD R/W to USB 3.0 Module

2.4.2 Create Disc

2.4.2.1 Used RITEK / DVD-R 8x blank Discs



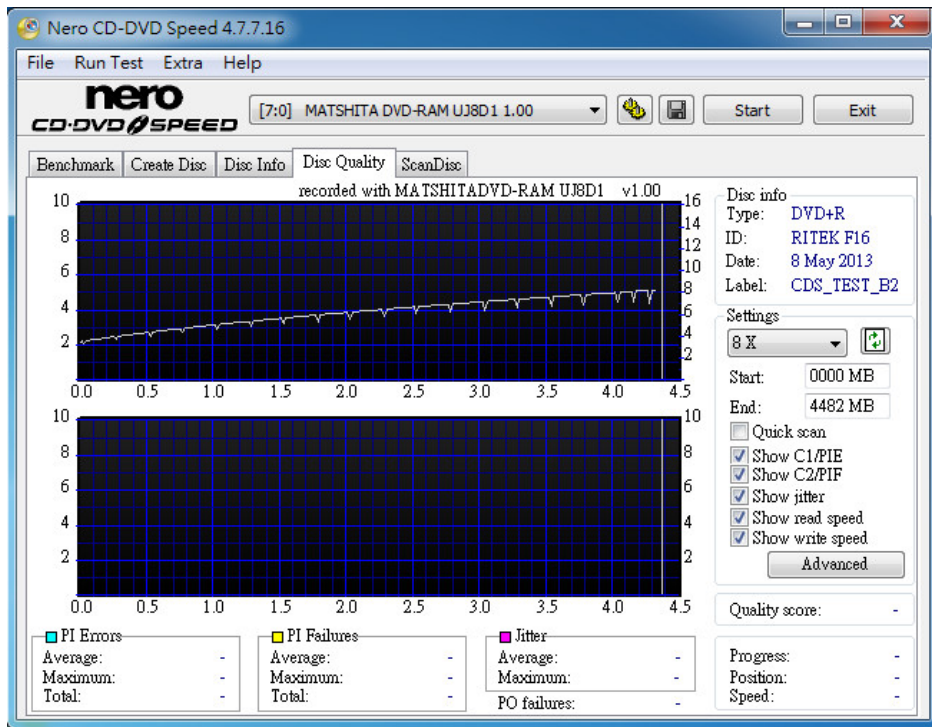
2.4.2.2 Used RITEK / DVD+R 8x blank Discs



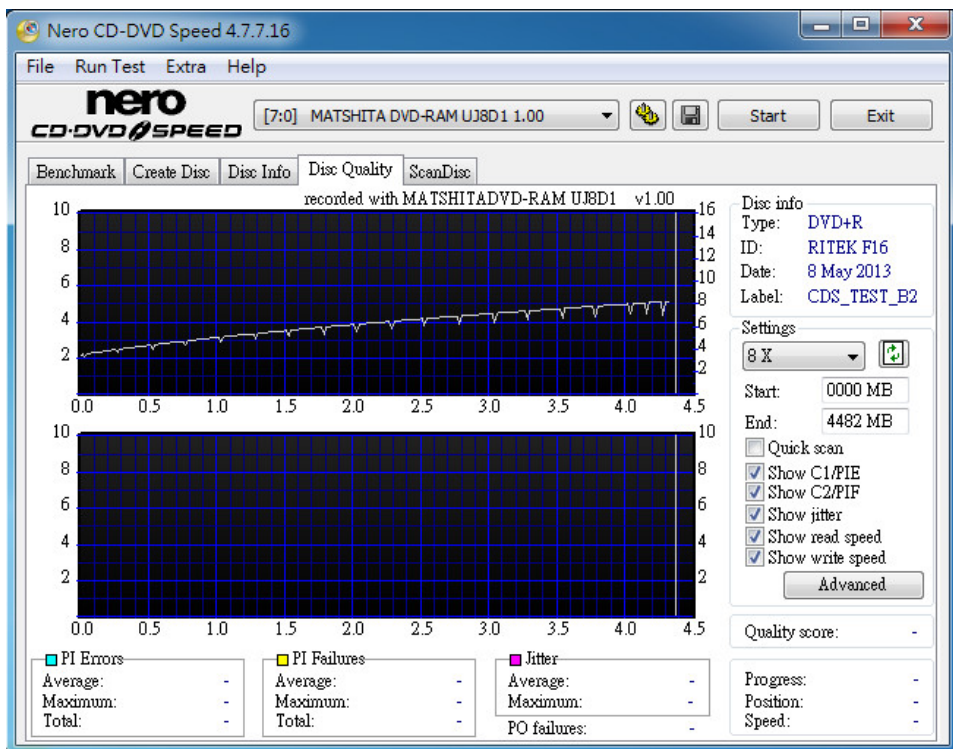
U216A / Slimline SATA CD, DVD R/W to USB 3.0 Module

2.4.3 Disc Quality

2.4.3.1 Used RITEK / DVD-R 8x blank Discs



2.4.3.2 Used RITEK / DVD+R 8x blank Discs

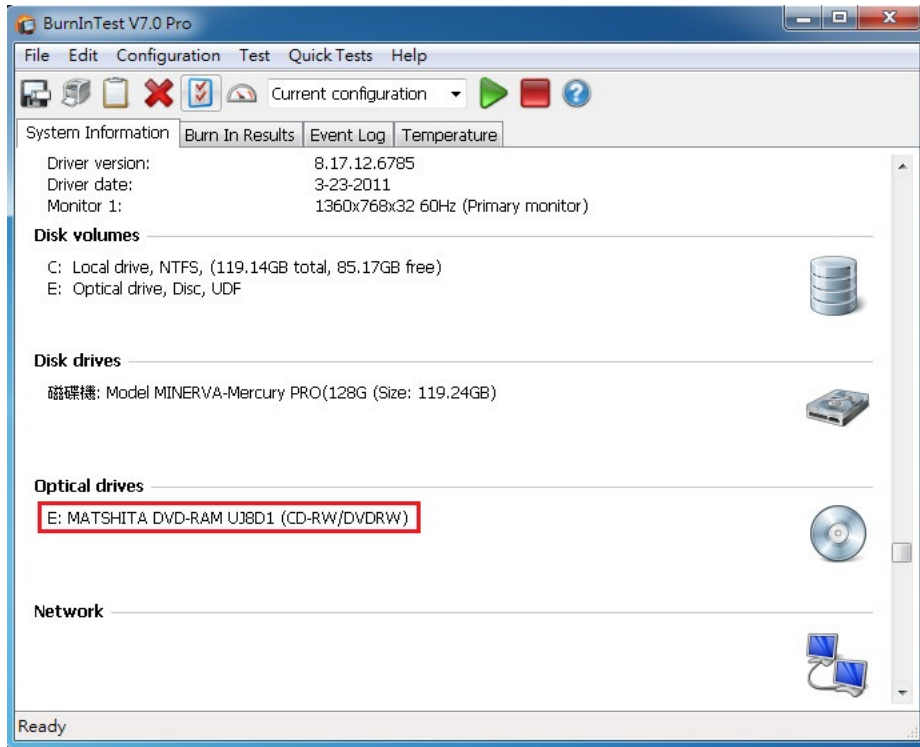


U216A / Slimline SATA CD, DVD R/W to USB 3.0 Module

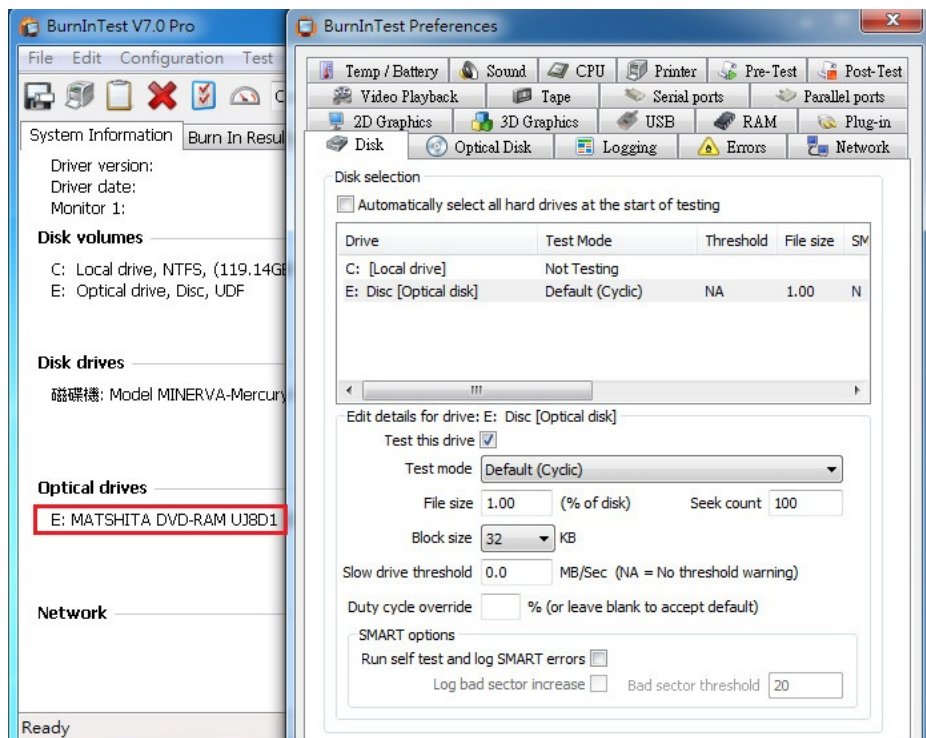
3. Burn In Tests and Results

3.1 BurnInTest v7.0 Pro

3.1.1 **system information:**

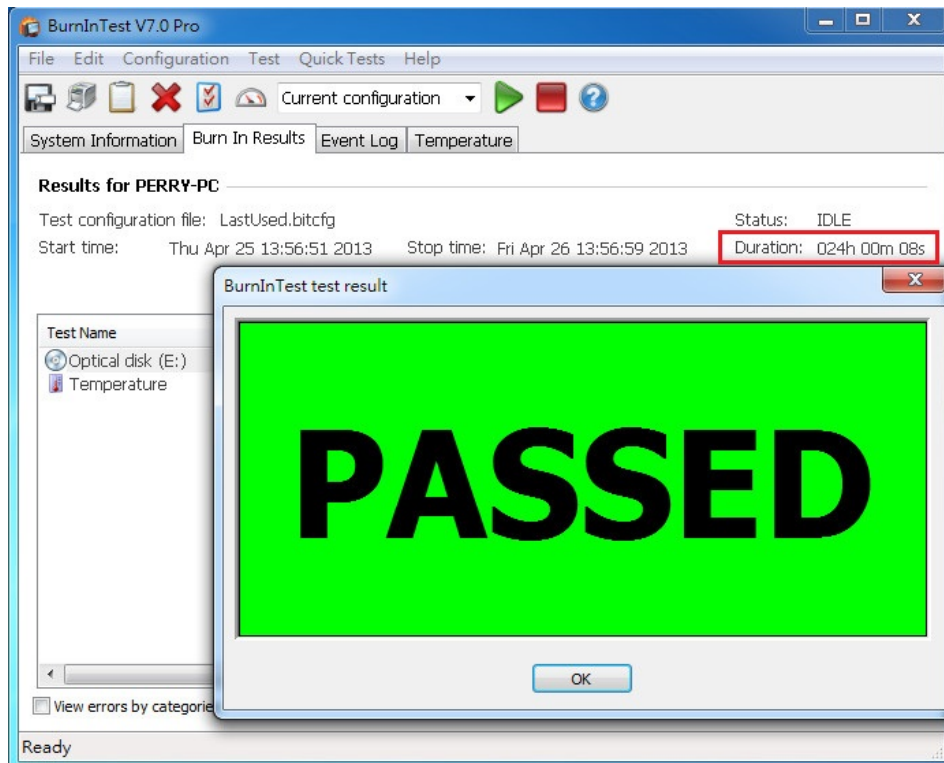


3.1.2 show Disk test mode(default cyclic -- 10 ways cycle test)



U216A / Slimline SATA CD, DVD R/W to USB 3.0 Module

3.1.3 show 24-hour Burn-in test **PASSED**



4. Summary

- U216A convert, following USB 3.0 Standard, Current spec I/O speed, max. to 5Gb/s.
- U216A Adapter by designed in 4 Layer pcb